



Cambridge Waste Water Treatment Plant Relocation Project  
Anglian Water Services Limited

  
**Section 47, Duty to  
Consult Local Community  
Final Statement of  
  
Community Consultation  
(SoCC)**

Application Document Reference: 6.1.8  
PINS Project Reference: WW010003  
APFP Regulation No. 5(2)q



# Cambridge Waste Water Treatment Plant Relocation Project



**Statement of Community Consultation**  
June 2021

Published in accordance with Section  
47 (6) of the Planning Act 2008

# Introduction

**Anglian Water is proposing to relocate its Cambridge Waste Water Treatment Plant on Cowley Road and build a new, low carbon waste water treatment plant that will continue to provide vital services for the community and the environment, recycling water and nutrients, producing green energy, and helping Cambridge to grow sustainably. The project is called the Cambridge Waste Water Treatment Plant Relocation (CWWTPR), referred to in the rest of this statement as ‘the relocation project’.**

This Statement of Community Consultation (SoCC) has been prepared in accordance with Section 47 of the Planning Act 2008 and guidance (<https://infrastructure.planninginspectorate.gov.uk/legislation-and-advice/guidance/>) to explain how Anglian Water intends to carry out its statutory consultation for the proposed application for a Development Consent Order (DCO) for the relocation project.

The proposals for the project are being developed in collaboration with stakeholders and the community. This SoCC outlines how we will consult with you during the ‘pre-application stage’ before we submit our DCO application for the project to the Planning Inspectorate. There is more information on the DCO process in Section 6 of this SoCC.

The approach to consultation set out in this document has been consulted on with Cambridge City Council, South Cambridgeshire District Council, Cambridgeshire County Council, East Cambridgeshire District Council and the Cambridgeshire and Peterborough Combined Authority.



# 1. Background

**South Cambridgeshire District Council and Cambridge City Council recently consulted on a draft Area Action Plan (AAP) for a new low-carbon city district in North East Cambridge, which could create 8,000 homes and 20,000 jobs over the next 20 years.**

Achieving the regeneration of the area relies on the relocation of Anglian Water’s Cambridge Waste Water Treatment Plant. We are working in partnership with the councils who have a long-standing ambition to unlock the development potential of the area, which has great walking, cycling and public transport links, including the new Cambridge North Station, making it a highly sustainable location for new homes.

The option of delivering homes and jobs through the AAP was identified in the adopted Cambridge City and South Cambridgeshire Local Plans. A number of alternatives were considered and consulted on with the local community as the Local Plans were developed by the councils between 2011 and 2014. The different issues and options stages for developing the AAP itself were consulted on between 2014 and 2019, as part of an open invitation to all residents and stakeholders of Cambridge City and South Cambridgeshire. Feedback from these consultations was used to help develop the draft AAP.

The relocation project isn’t about simply moving the old facility to a new location.

Anglian Water is planning to build a modern, low carbon water recycling centre for Greater Cambridge. The new facility will provide vital services for the community and environment, recycling water and nutrients, producing green energy, helping Cambridge to grow sustainably.

We will establish new habitats for wildlife and create improved access to the Cambridgeshire countryside, as well as connecting to existing footpaths and access routes. We want to create a place where water, people and landscape come together.

Following on from our first phase of consultation on the site selection for the relocation project in Summer 2020, we want to continue to work with and hear the views of the community and other stakeholders to ensure we develop our plans responsibly and in a manner that supports community aspirations and interests. Our consultation process provides the opportunity for the local community to engage with and respond to the proposals for the relocation project as the plans evolve.

# 2. About us

**Anglian Water employs around 5,000 people and supplies water and waste water services to almost seven million customers in the East of England and Hartlepool.**

Because of our region’s size, we operate more water and waste water treatment plants than any other water company – around a quarter of all the plants in England and Wales. In Cambridge, we provide waste water services, while the water supply is provided by Cambridge Water.

Above and beyond the provision of fresh, clean water and the effective treatment of waste water, our purpose

is to bring environmental and social prosperity to the region we serve through our commitment to ‘love every drop’. Our region faces particularly acute challenges from climate change, severe drought, population and housing growth and the need to enhance the natural environment. We firmly believe we have a responsibility to help tackle them to help our region thrive, now and in the future.

## Our strategic direction



Make the East of England resilient to the risks of drought and flooding



Enable sustainable economic and housing growth in the UK’s fastest-growing region



Be a net zero carbon business by 2030



Work with others to achieve significant improvement in ecological quality across our catchments

The **largest** water and water recycling company in England by geographic area



Serving almost **7 million** customers across the East of England and Hartlepool



One of the UK’s fastest-growing regions, projected to grow by

**175,000** homes by 2025

### 3. Cambridge Waste Water Treatment Plant Relocation Project

**Our proposals involve building a modern, low carbon waste water treatment plant on a new site area north of the A14 between Fen Ditton and Horningsea within the Cambridge drainage catchment area, to replace the plant on Cowley Road.**

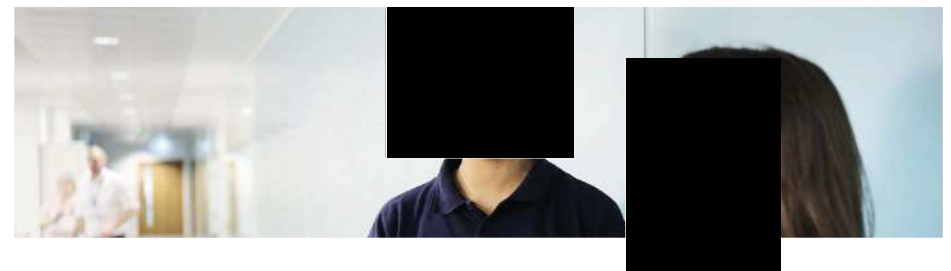
Since 1895, the current site at Cowley Road has been serving the needs of Cambridge and Greater Cambridge by receiving waste water from people’s homes and businesses and returning it to the environment. The site also plays a vital role in storing and treating storm flows during heavy rainfall, before discharging cleaned water to the River Cam. On average the site treats 1,300 litres of used water a second – that’s equivalent to more than 9 million toilet flushes a day. The treatment of sludge on site generates renewable energy via anaerobic digestion and produces biofertiliser.

The relocation of the waste water treatment plant will allow Anglian Water to continue providing vital waste water services to customers across Cambridge and Greater Cambridge in a new, low carbon plant. The new plant will continue storing and treating storm flows and treating sludge to produce renewable energy. It will be equipped to deal with a growing population. It offers the opportunity for a joined-up solution for treating waste water from Cambridge and Greater Cambridge, including Waterbeach. The proposal is for both waste water from the existing Waterbeach waste water treatment plant and future flows from Waterbeach New Town to be treated at the new Cambridge waste water treatment plant. Any reference to ‘Waterbeach’ therefore includes existing Waterbeach and the New Town.

Between July and September 2020, we held our non-statutory phase one consultation. We asked for your views on three potential locations for the relocation project. In January 2021 we completed our site selection process which concluded the best performing site is the area north of the A14 between the villages of Fen Ditton and Horningsea (referred to as Site 3 in our consultation materials). We communicated the decision in our Site Announcement Report and made available all supporting site selection documents. Information on how we reached this decision, including how we considered the feedback we received and our vision for the site, is available on our website ([www.cwwtpr.com](http://www.cwwtpr.com)).

#### The proposals for the relocation project include:

- An integrated waste water and sludge treatment plant.
- A shaft to intercept waste water at the current site on Cowley Road and a tunnel/ pipeline to transfer it to the new site and terminal pumping station.
- A tunnel/pipeline transferring treated waste water to a discharge point on the River Cam, including a transfer pumping station.
- A pipeline transferring waste water from Waterbeach to the new site.
- An upgraded Fen Ditton rising main to connect to the new site.
- Ancillary on-site buildings, including work offices, substation building, workshop, Discovery Centre, vehicle parking including electrical vehicle charging points, fencing and lighting.
- Renewable energy generation via anaerobic digestion which is part of the sludge treatment process that produces gas that will feed directly into the local gas network heating homes.
- Renewable energy generation via solar photovoltaic and battery energy storage system.
- Other associated development such as site access, utilities, connection to the site drainage system, landscaping and off-site highway network alteration measures to reduce potential traffic impacts.
- A new vehicle access including for Heavy Goods Vehicles (HGV’s) bringing sludge onto the site for treatment.
- Environmental mitigation and enhancements including improved habitats for wildlife, landscaping, bunds, and increased recreational access and connectivity.





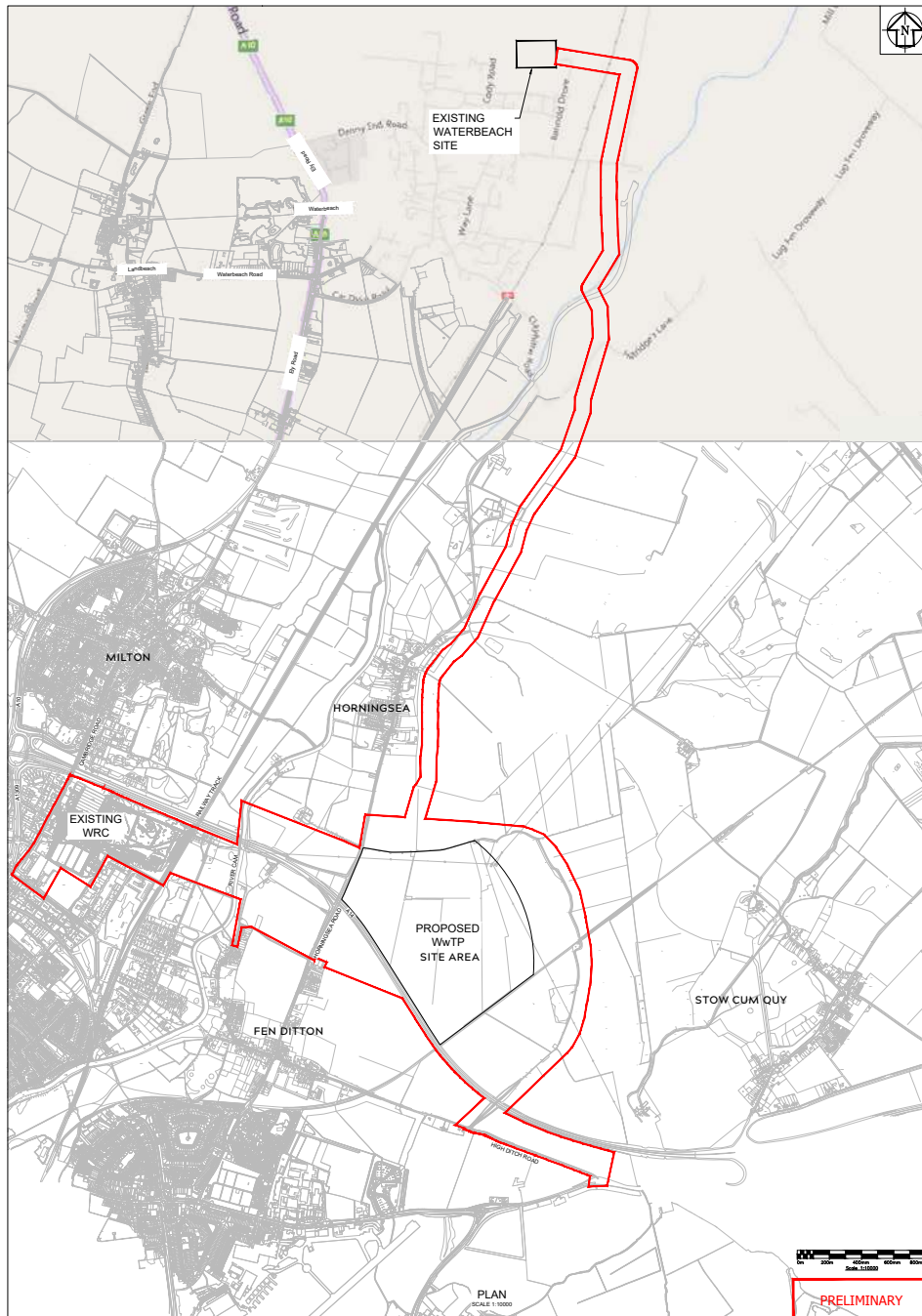


Figure 1: Indicative project boundary for the relocation project.

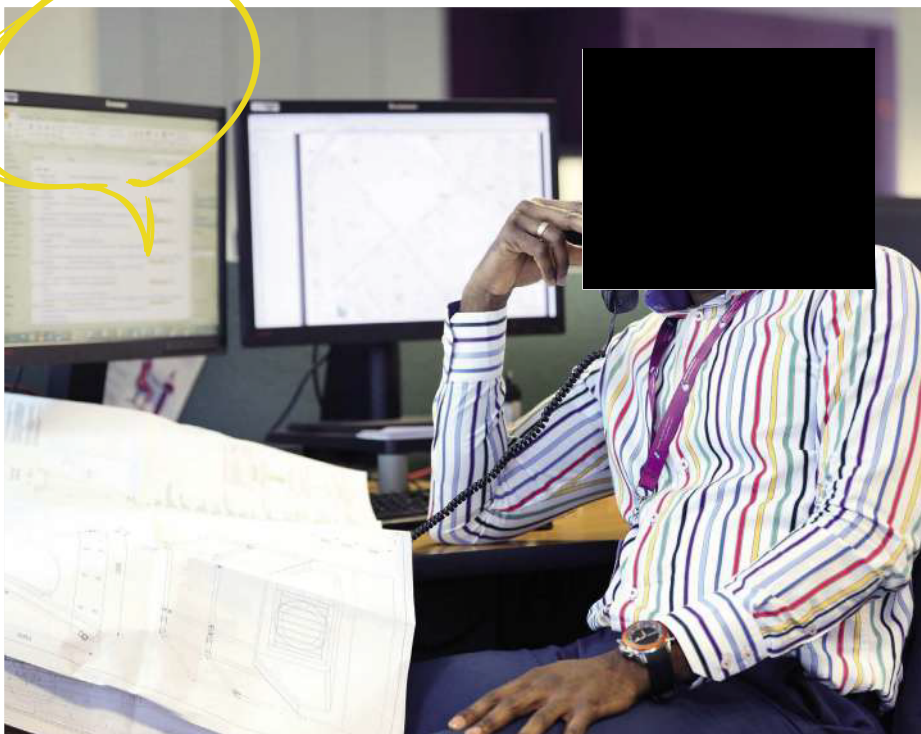
## 4. What will we consult on?

Anglian Water will be seeking feedback from the local community on our plans for the relocation project. We have already held our phase one non-statutory consultation to inform our site selection process and will be holding two phases of statutory consultation on the development of the plans for the relocation project at the chosen site.

	What we will consult on
<p><b>Phase one non-statutory consultation (held July – September 2020)</b></p>	<p>The three shortlisted site areas.</p> <p>Proposed tunnel routes for each of the three site areas. This included tunnels to take waste water to the site for treatment and treated waste water away from the site to the River Cam.</p> <p>The criteria local communities consider to be most important in selecting a final site.</p>
<p><b>Phase two statutory consultation (planned for Summer 2021)</b></p>	<p>Outline preliminary design proposals and options, demonstrating how the relocation project could look to local residents and visitors and how it might operate. This will include details about temporary access arrangements for preliminary construction works and permanent access for the main construction phase and for the plant’s operation, and visualisations of our preliminary design for the plant.</p> <p>Information on key topics such as traffic and access, odour, local ecology and biodiversity, landscaping and local heritage, visual impact, carbon, and climate change. This includes details about how these influence design and form part of our construction and operational assessments to identify any necessary mitigation measures.</p> <p>Opportunities for delivering increased habitat for wildlife and working collaboratively to help achieve local environmental goals, including supporting our net zero carbon targets, and increasing connectivity to the countryside, improving local amenity for the community.</p>

	What we will consult on
Phase three statutory consultation (planned for 2022)	<p>Detailed design proposals for the relocation project.</p> <p>Comprehensive mitigation measures and updated environmental information.</p> <p>Our Preliminary Environmental Information Report (PEIR).</p>

There is more information on the three phases of consultation and how we will consult in Sections 8 and 9 of this SoCC.



## 5. Who will we consult?

**Our consultation process is open to anyone who may be interested or in any way feels impacted by our proposals for the relocation project. You can get in touch with us at any stage of the development process. Our contact details can be found later in Section 11 of this SoCC. We are seeking to actively engage with the widest possible range of individuals and groups, and wish to make it as easy as possible for everyone to respond, regardless of their personal circumstances.**

Anglian Water is continuing to work with the local authorities on plans for the relocation project. These discussions have already helped us to develop our understanding of the area and the surrounding communities and informed an area to guide our pre-application consultation. The consultation area has been divided into two separate zones. As part of our iterative and phased approach to consultation we have revised the area of our core consultation zone following our non-statutory phase one consultation, relative to the selected site. We will continue to ensure that anyone who may have an interest in our proposals is properly consulted in a way that is proportionate and reasonable. The consultation zones shown in figure 2 are:

A **core consultation zone** which has been defined through encompassing a minimum area of 1km immediately surrounding the proposed waste water treatment plant, measured from the centre point of the plant area as shown in the indicative project boundary for the relocation project. Beyond this 1km area, the zone also extends by a minimum of 200m from the existing waste water treatment plant on Cowley Road, and the associated tunnel/pipeline corridors, including the pipeline to transfer waste water from Waterbeach to the proposed new plant, also included within the indicative project boundary for the relocation project.

The area has been extended further where proportionate and reasonable based on zones of theoretical visibility and anticipated traffic routes for the site from our Stage 4 – Final Site Selection and to take account of feedback received during our non-statutory phase one consultation. This includes encompassing the communities of Teversham, Lode and North Barnwell, as well as the villages of Horningsea, Fen Ditton, Stow-cum-Quy, Milton, Waterbeach, Bottisham and Little Wilbraham. Due regard has been given to ensure that communities are not inappropriately severed between consultation zones.

The core consultation zone principles we have defined in this SoCC will be applied during phases two and three of consultation, subject to changes to the indicative project boundary for the relocation project as the proposals continue to develop. Those within the core consultation zone will be consulted as set out in Sections 8 and 9 of this SoCC.

A **wider consultation area** has been identified as we recognise that there may be some interested individuals or parties who are not within the core consultation zone. We are committed to ensuring that people in this area are still aware of our proposals and have opportunities to get involved. We will notify those within the wider local area of our consultation by advertising in local media, placing local notices and using social media. Informative consultation materials will be available to view and collect from identified community access points outside our core consultation zone. Public buildings may be unable to host materials due to COVID-19 restrictions, however, we will ensure that all consultation materials are easily available. Hard copies of our consultation materials will be made available via post on demand and we will publicise, as part of our statutory notices, a service for requesting hard copies of full technical documents. Organisations representing Hard to Reach groups will be contacted to ensure that our approach best meets the needs of their members and we will work with local authorities including parish and district councils to advertise and promote the consultation. See Sections 8 and 9 for further details.

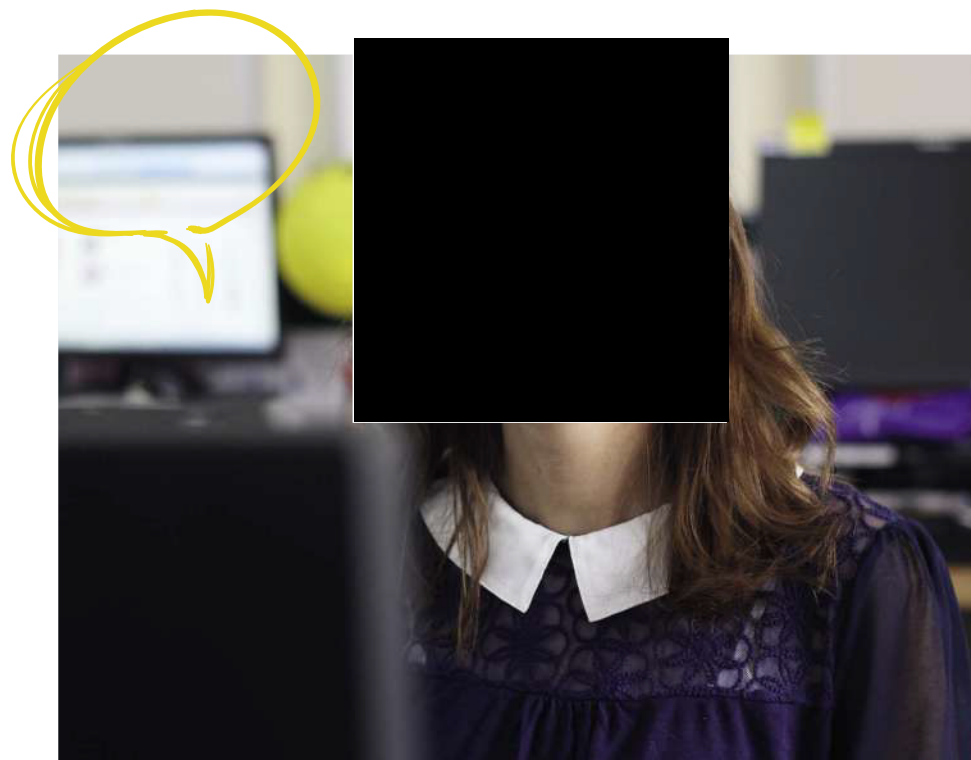
As the project develops, we are continuing to work with local authorities to identify any relevant community groups and business organisations who should be consulted. As well as the community consultation, we will be discussing the project with a range of statutory consultees in accordance with the Planning Act 2008, including:

- Owners, tenants and occupiers of the land included within the Development Consent Order (DCO) application.
- Elected representatives, including parish councillors in whose area the proposals are sited and those in adjoining councils, county councillors, local authority elected members and MPs.
- Statutory consultees such as Natural England, the Environment Agency, Cambridgeshire County Council, Highways England and other bodies such as the Ely Group of Internal Drainage Boards.
- Local interest groups, residents' associations, and organisations such as the Bedfordshire, Cambridgeshire and Northamptonshire Wildlife Trust.
- Establishing a series of Technical Working Groups (TWGs) with the relevant statutory consultees, regulatory and environmental bodies. The membership will include local authorities, Highways England, the National Trust and the Environment Agency. The purpose of the TWGs is to provide input into the EIA scoping exercise and discuss the scope and methodology for assessments. We will consult with the TWGs on the environmental and survey information as part of the Environmental Impact Assessment (EIA) and DCO submission processes and discuss where necessary mitigation proposals (see Section 7 for further details).

### Ensuring accessible consultation

Anglian Water has developed the consultation to be accessible to all groups in the community. This is particularly important in the current situation, where public gatherings may continue to be restricted owing to Government guidance and health protection measures because of COVID-19. The approach to consultation outlined in this SoCC offers a range of communication methods for conducting open, inclusive and meaningful consultation across the community during the COVID-19 pandemic and in the instance of any future recurring or regional lockdown measures.

Our consultation methods, described in Section 9 of this SoCC, set out the use of digital engagement methods and how we will consult with those without digital access. Anglian Water recognises that some individuals or groups may have difficulties taking part in the consultation process for a range of reasons. We have identified groups which represent people with protected characteristics under equalities law in the consultation area, along with organisations that may be able to assist those that are excluded from digital engagement within the consultation area. These organisations will be contacted at the start of each consultation phase to ensure that our approach best meets the needs of its members.





# 6. The planning process

## The Secretary of State for Environment, Fisheries and Rural Affairs has confirmed the relocation project as a Nationally Significant Infrastructure Project (NSIP).

This means Anglian Water needs to submit a Development Consent Order (DCO) application to the Planning Inspectorate (PINS)\* to approve its construction and operation. While ultimately the Planning Inspectorate makes a recommendation to the Secretary of State on whether to grant or refuse the application, the NSIP process requires comprehensive local engagement and provides opportunities to influence the consenting process, both through public consultation and a public examination.

Consultation zone map

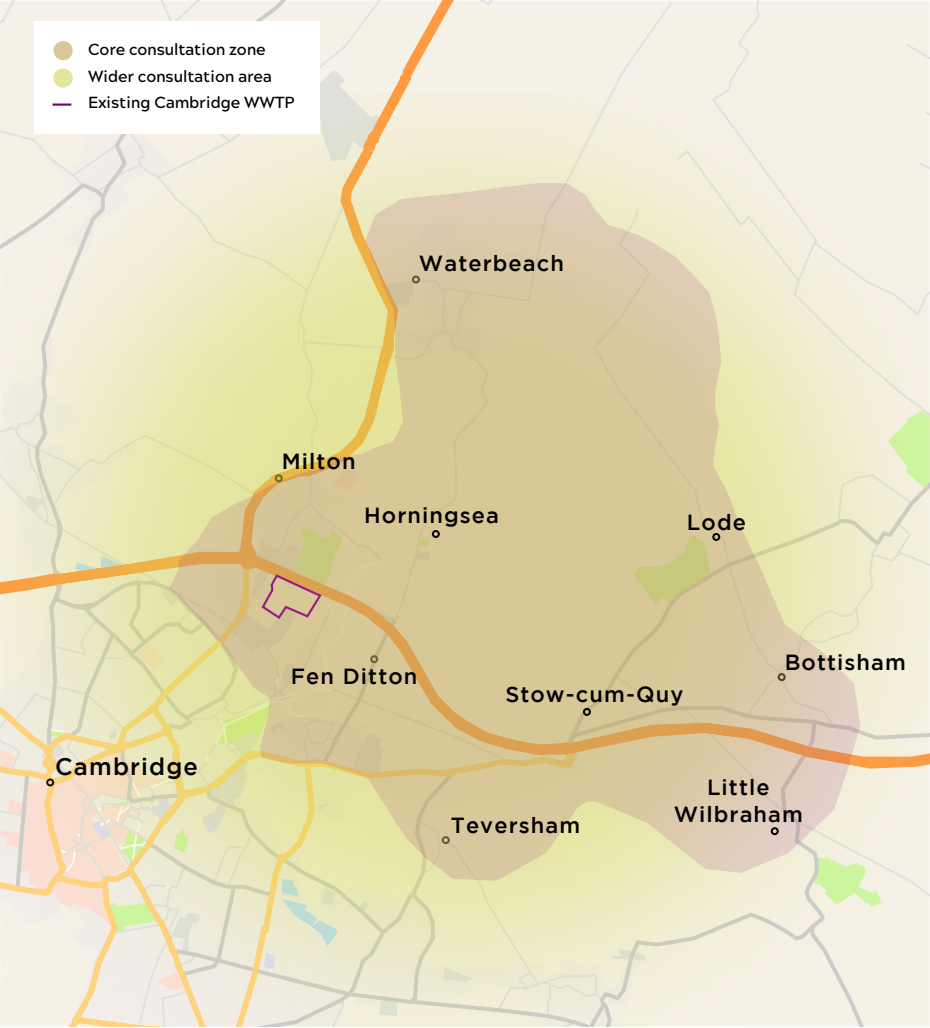


Figure 2: Core consultation zone.



\* You can view more information on the DCO planning process on PINS website: <https://infrastructure.planninginspectorate.gov.uk/application-process/the-process/>

## 7. Environmental information

**The project is one for which an Environmental Impact Assessment (EIA) is required and Anglian Water will therefore undertake an EIA for the project. EIA is a process where the likely environmental effects of the proposed development are studied, surveys are carried out and mitigation measures (things which reduce or remove environmental impacts) are identified.**

The methodology and scope of the EIA and how it will be carried out will be discussed with the relevant regulatory and environmental bodies (for example, the Environment Agency) and the local planning authorities. The process will include the production of the following reports, which will be made available electronically and on our project website.

**Scoping Report** – The Scoping Report, submitted to PINS, will provide background environmental information on the project. PINS will consult with local authorities and statutory consultees on our report, before providing its opinion on what environmental surveys and assessments we should carry out as part of the EIA process and to produce the Environmental Statement, which is required as part of our DCO application.

**Preliminary Environmental Information Report (PEIR)** – The PEIR will present the preliminary findings of environmental studies in an accessible and concise manner. It will summarise the potential likely effects of the proposals on the environment and local communities and outline what we propose to do to reduce or eliminate those effects. This will enable those who have an interest in the relocation project to develop an informed view of the potential impacts it may have on the local environment. We will be seeking feedback on the findings of the PEIR through our third phase of consultation in 2022.

**Environmental Statement (ES)** – The ES will detail the findings of the completed EIA process, setting out our final assessment of the likely effects of the project and the mitigation we will propose. The ES will form part of the DCO application for submission and is an important document for the public examination process carried out by PINS.

Copies of the Scoping Report and PEIR together with any other key reports such as non-technical summaries, will be made available as part of the pre-application consultation process. A draft of the ES will be discussed with technical stakeholders through the TWGs and will be made available to other consultees on request, but will not form part of our Section 47 pre-application consultation process in accordance with the Planning Act 2008. The ES will form part of the DCO application submitted to PINS. You can register as an interested party and will be able send your comments in writing and request to speak at a public hearing as part of the DCO examination process, as explained in Section 6.

## 8. Public consultation process

**The consultation process for the relocation project consists of three phases.**

### Phase one public consultation

We held our phase one public consultation between 8 July 2020 and 14 September 2020. This non-statutory consultation phase introduced the community to our early-stage proposals for the relocation project and the shortlisted site area options. The feedback we received helped to develop and refine our proposals and identify a site for the new facility. Due to COVID-19 restrictions and the need to keep people safe, the phase one consultation was held without face-to-face public gatherings.

### Community Working Groups

Following phase one consultation, we have established a series of Community Working Groups (CWGs). We invited representatives from local parish councils within the core consultation zone, to participate to help develop our proposals and also consider issues which may directly affect residents, such as traffic and construction impacts. We will hold regular CWG meetings in between phases of consultation to enable a dialogue and guide the evolution of the project plans from a local perspective. Minutes of the CWG meetings will be made available on our website: [www.cwwtpr.com](http://www.cwwtpr.com).

### Phase two public consultation

Our statutory phase two consultation is planned to take place in Summer 2021 and will run from 23 June - 18 August. Our approach will be guided by the Government's policy on COVID-19 restrictions at the time of our phase two consultation, and the need to keep people safe. We will continue to liaise with the relevant local authorities and ensure that all consultation material is easily accessible. We will offer online community webinar events and will work with hard-to-reach groups to ensure our consultation can be accessed. The consultation will be advertised through our consultation leaflet, in the Cambridge News and Cambridge Independent and by displaying information posters in local information points.

This statutory consultation, in accordance with Section 47 of the Planning Act, will allow us to update you on our proposals at the selected site and to consult with you on our design proposals, giving an early indication of what the new relocation project could look like. More specific details of what we will consult on during phase two are listed in Section 4 of this SoCC, and the methods for how we will consult are listed in Section 9 below.

### Phase three public consultation

Phase three of our public consultation is planned to take place in 2022. This further statutory consultation, in accordance with Section 47 of the Planning Act, will allow us to update you on our project plans, including how the feedback we received during phase two has shaped our proposals for the relocation project. At this stage we will publish our Preliminary Environmental Information Report (PEIR) and a non-technical summary for consultation.

More specific details of what we will consult on during phase three are listed in Section 4 of this SoCC, and the methods for how we will consult are listed in Section 9 below, subject to any COVID-19 restrictions.

### Ongoing engagement

Anyone is welcome to get in touch with us at any point before, during or in-between these consultation phases. Our contact details are listed in Section 11 of this SoCC. From now until our application is submitted, we will consider the feedback and comments we receive and incorporate these within our proposals where possible. You will also have the opportunity to formally comment on our proposals for the relocation project when the DCO application is submitted to the Planning Inspectorate. Guidance on the process can be found on the PINS website at: <https://infrastructure.planninginspectorate.gov.uk/legislation-and-advice>.

### Interim consultation reporting

Following each phase of consultation we will provide our interim consultation report, which is a summary of the responses we have received and how we have listened to feedback. Our interim consultation reports will be posted to our core consultation area, published on our project website and made available to view with copies to take away at our Community Access Point (CAP) sites listed in Section 10 of this SoCC (subject to COVID-19 restrictions). You may also request a hard copy from the project team using our communications lines shown in Section 11 of this SoCC.

### Consultation reporting

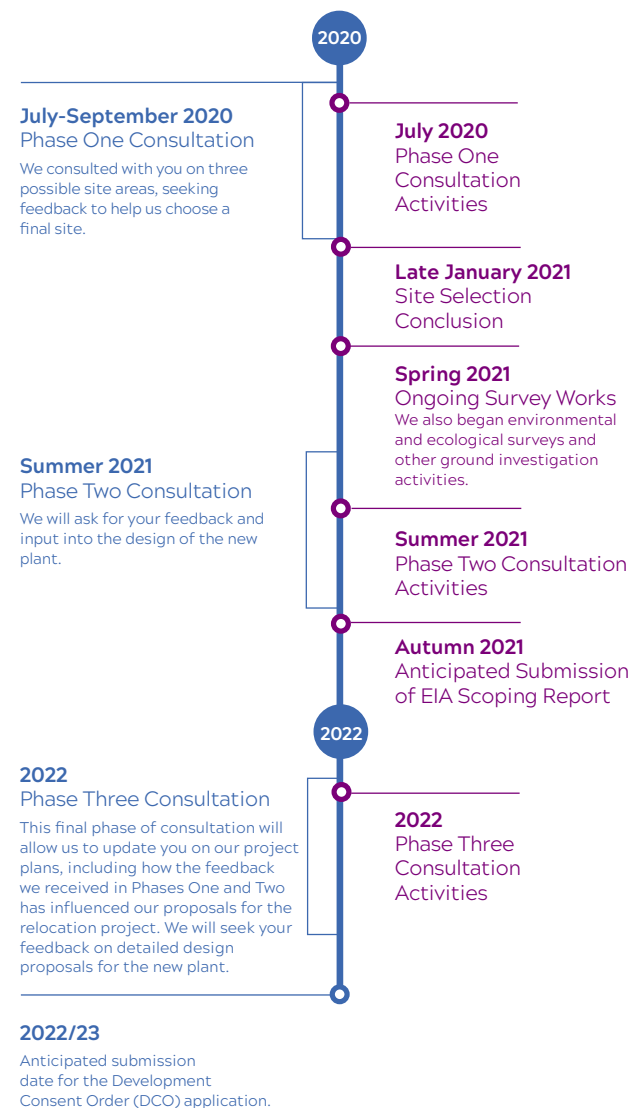
As part of the DCO application to be submitted to the Planning Inspectorate planned for 2022/2023, we will publish a Consultation Report that:

- Describes our consultation process.
- Explains how we have satisfied and adhered to legal requirements.
- Details how we have worked with local authorities to ensure our consultation is suitable for the area.
- Provides a summary of the feedback and consultation responses we have received.
- Responds to the feedback we have received, including explaining how your feedback has influenced our proposals.

### Being aware of other local consultations

We will have regard to other consultation processes in the area, for example, North East Cambridge Area Action Plan (AAP) consultation, as well as public meetings of local authorities, to avoid clashing meetings and events.

### Community consultation timeline



## 9. How we will consult

**The consultation activities described in this section of the SoCC ensure inclusive, meaningful and open consultation during each phase. Our statutory phase two consultation is planned to take place in Summer 2021 and will run from 23 June - 18 August.**

We will carry out our phase two public consultation in the following ways:

- Mailing consultation materials to all homes and businesses in the core consultation zone.
- Providing materials at community access points (if not restricted by COVID-19 measures). Our Community Access Point (CAP) sites are listed in Section 10 of this SoCC.
- Provision of freephone information line, email address, FREEPOST address and a dedicated project website.
- Hosting a virtual exhibition available on our website: [www.cwwtpr.com](http://www.cwwtpr.com).
- Hosting community webinars (where in-person consultation events with members of the project team may be restricted by COVID-19 measures).
- Requesting feedback via our digital engagement platform. This can be accessed via our project website.
- Offering to meet with parish councils, representatives of hard-to-reach groups and other key stakeholders to brief them on the proposals and ensure the consultation meets their needs (may be held via online meetings and webinars where restricted by COVID-19 measures).
- Advertising the consultation and different methods for getting involved by placing adverts in the Cambridge News and Cambridge Independent and displaying information posters at local information points such as shops or civic buildings.
- Promoting the consultation via our dedicated project Twitter account @CambridgeWWTpr.
- Providing parish councils with digital materials to enable them to advertise and promote the consultation via their own websites, social media and online community forums.



### Consulting during COVID-19

Our consultation activities will continue to include a range of methods to ensure our consultation can be accessed by all members of the community. This is especially important given the challenges we have all been adapting to owing to the COVID-19 pandemic, including restrictions on meeting in person and the need to keep people safe. As well as being able to host consultation material in public buildings we hope to be able to offer in-person consultation events for our phase three consultation, depending on any future national or regional restrictions that may apply.



### Meetings and events

**Consultation events** will be held where face-to-face meetings are permitted. The events will be held at community locations across the core consultation area (see Section 5) and will be advertised via our consultation leaflet, on our project website, across local media (with adverts in the Cambridge News and Cambridge Independent a minimum of two weeks in advance, where possible) and across our CAP sites and local information points.

**Webinars** will be held where consultation events cannot be held owing to COVID-19 restrictions and the need to keep people safe. These forums will provide communities with an opportunity to ask questions to our project team. Webinars will be advertised in the same way as consultation events would be.

**Virtual exhibition** will be available for you to view information on the project in a similar way to being at a consultation event but online. Our virtual exhibition will remain open throughout our phases of consultation, even if face-to-face consultation events can be held.

**Meetings** and briefing sessions will be arranged with your local parish councils and with key local stakeholder groups. These meetings will be held in person where possible. Where not possible owing to COVID-19 restrictions, these meetings will be held via online webinars.

**Community Working Groups** As explained in Section 8, we have established a series of Community Working Groups (CWGs). We have invited representatives from local parish councils and community groups to participate to consider issues which may directly affect residents, such as traffic and construction impacts. We will hold regular CWG meetings to enable a dialogue and guide the evolution of the project plans from a local perspective. These meetings will be held via online meetings and webinars in circumstances where there are restrictions on public gatherings.



**North East Cambridge Community Forum** will be attended by Anglian Water alongside representatives from the Greater Cambridge Shared Planning Service in an open public meeting to discuss and present information regarding the development of North East Cambridge.



### Our digital engagement platform

**The digital engagement platform** will present our plans in an interactive way online and can be accessed via our project website. We will invite your feedback during our consultation phases for you to post on our interactive map and you will be able to see feedback from other members of the community. The platform will be open during the consultation phases even if face-to-face consultation events are held.



### Literature

**Consultation leaflets** will be posted to all properties in the core consultation zone at the start of the consultation, and provided to elected representatives and representatives of hard-to-reach groups, to introduce the scheme and how people can get involved. Leaflets can also be posted to those outside the core consultation zone on request and will be made available on our project website and at our CAP sites.

**Our consultation leaflets** will provide information on the proposals and what we're consulting on. This will include the consultation deadline and details of the consultation activities being undertaken, such as dates, times and locations of consultation events or community webinars and details of how to access the virtual exhibition and digital engagement platform.

**Feedback forms** will be posted together with the consultation leaflet to the core consultation area where we cannot host in-person consultation events. These can be filled in and posted back to us via FREEPOST, if you prefer this to providing feedback digitally. These will also be provided on request via post. Feedback forms will also be made available in hard copy to take away at our CAP sites. You can also request a copy from the project team by contacting us through our communications lines shown below. The feedback form is also replicated to fill in on our digital engagement platform.



**Non-technical summary reports** will be made available online and provided on request via post.

### Communications lines

Our communications lines are open throughout the entire pre-application stage. Through these channels you will be able to speak to a member of our consultation team to ask questions, request information (including in alternative format) and provide feedback.

**A Freephone information: 0808 196 1661**

**Via email:** [REDACTED]

**Via Freepost**, free of charge to: **FREEPOST: CWWTPR**



### Project website

**A dedicated project website** is live for you to find out more information and provide your feedback: [REDACTED]



### Advertising and local notices

**Local press adverts** will be placed in the Cambridge News and Cambridge Independent to inform local communities of the forthcoming phases of consultation and deadlines for providing feedback. The adverts will detail how the consultation activities are being undertaken such as dates, times and locations of consultation events (if not restricted by COVID-19 measures); dates, times and registration details for webinars; and details of how to access the virtual exhibition and digital engagement platform.

**Local information points** such as local shops or civic buildings will be provided with posters to inform local communities of the consultation and deadline for providing feedback, and details of the consultation activities being undertaken such as dates, times and locations of consultation events (if not restricted by COVID-19 measures); dates, times and registration details for webinars, and details of how to access the virtual exhibition and digital engagement platform.

**Social media** will inform local communities of our consultation process and how to get involved via our dedicated project Twitter account @CambridgeWWTPr.

**Parish councils** will be provided with digital materials to enable them to advertise and promote the consultation via their own websites, social media and online community forums as they desire. This includes the parish councils of Fen Ditton, Horningsea, Stow-cum-Quy, Milton, Lode, Waterbeach, Teversham, Bottisham, and Little Wilbraham and Six Mile Bottom. We will also work with local authorities including parish and district councils to identify additional local publications and venues where publicity about the consultation and how to get involved can also be signposted.



### Local media engagement

We will also be seeking to promote our phase two consultation by engaging with the following local news media outlets: Cambridge Independent, Cambridge News, BBC Radio Cambridge, BBC Look East, ITV Anglia, Business Weekly and Cambridge Live. This includes local radio and television media to broadcast the consultation to a wider audience and further ensure that interested individuals or parties are aware of our proposals and have opportunities to get involved.



### Hard-to-Reach Groups

Anglian Water recognises that some individuals or groups may have difficulties taking part in the consultation process for a range of reasons. We have identified groups which represent people with protected characteristics under equalities law in the consultation area, along with organisations that may be able to assist those that are excluded from digital engagement within the consultation area (e.g. South Cambridgeshire Traveller Liaison Officer, Age UK Cambridgeshire & Peterborough, Disability Cambridgeshire). These organisations will be contacted at the start of each consultation phase to ensure that our approach best meets the needs of its members.



### Alternative formats and specific requests

Hard copies of our consultation materials, including non-technical summary reports, will be made available on request. During our phase two and three consultations we will seek to provide access to hard copies of all materials, including technical documents, via both public information points and at face-to-face consultation events, dependent on the latest national or regional COVID-19 restrictions which may apply.

We will publicise as part of our statutory notices a service for requesting hard copies of technical documents, such as the Preliminary Environmental Information Report (PEIR), for those who wish to request individual hard copies of these, and the process and requirements for providing them.

Documents will also be able to be requested in large print, audio or braille formats. Requests for translated summary documents will be considered on a case-by-case basis.

## 10. Community access points

**Hard copies of this document and our future consultation leaflets will be available at the following public buildings:**

### South Cambridgeshire District Council

South Cambridgeshire Hall  
Cambourne Business Park  
Cambourne  
Cambridge  
CB23 6EA

### Waterbeach Library

Community Centre  
High Street  
Waterbeach  
Cambridge  
CB25 9JU

### Cambridge City Council

Mandela House  
4 Regent Street  
Cambridge  
CB2 1BY

### Barnwell Road Library

87 Barnwell Road  
Cambridge  
CB5 8RQ

### East Cambridgeshire District Council

The Grange  
Nutholt Lane  
Ely  
CB7 4EE

### St. Peter's Church

St. John's Lane  
Horningsea  
Cambridge  
CB25 9JQ

### Bottisham Library Access Point

Bottisham Village College  
Lode Rd  
Bottisham  
Cambridge  
CB25 9DL

Due to COVID-19, some public buildings may be unable to host documents, or may be accessible by appointment only. Opening times may also vary. All documents are available on our project website [www.cwwtpr.com](http://www.cwwtpr.com) or hard copies can be posted on request.

## 11. Contact us

**Our consultation team is on hand to take your questions and register your comments on the proposals for Cambridge Waste Water Treatment Plant Relocation Project.**

You can:

Email us at [REDACTED]

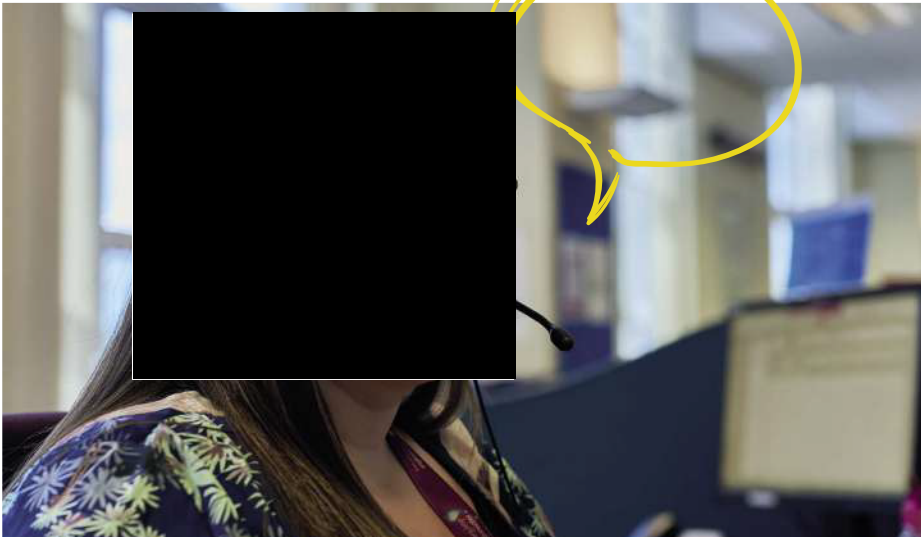
Write to us at **FREEPOST: CWWTPR**

Call our Freephone information line at  
**0808 196 1661**

Visit our website at [REDACTED]

Follow us on Twitter at [REDACTED]

If you would like this document in large print, audio or braille formats, please contact us using the details above. All graphics and maps in this document are for illustrative purposes.



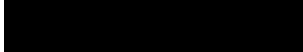




## Get in touch

You can contact us by:



Emailing at 



Calling our Freephone information line on **0808 196 1661**



Writing to us at **Freepost: CWWTPR**



Visiting our website at 

You can view all our DCO application documents and updates on the application on The Planning Inspectorate website:

<https://infrastructure.planninginspectorate.gov.uk/projects/eastern/cambridge-waste-water-treatment-plant-relocation/>